



SW900V

Smartwash Pass-through Warewasher



The Smartwash Range is Australia's premier pass-through warewashers. These sleek, intelligent systems redefine dishwashing with one-touch control panels, digital temperature displays for HACCP compliance, and outstanding sustainability in water and energy usage. Compact and stylish, they prioritize space and aesthetics. Certified for ventless installation (SEED), their innovative heat recovery system recycles steam energy, conserving power with every cycle. Experience advanced warewashing that's efficient, certified, and environmentally conscious.

SW900V standard features and benefits

- Water saving - uses only 1.8 litres per cycle
- User friendly ONE TOUCH control panel with digital wash and rinse temperature displays for easy HACCP recording
- Four wash cycles of 60, 90 & 180 seconds + special (time variable wash cycle chosen by operator - time limit 12 min)
- Built-in detergent and rinse aid pump fitted as standard
- Huge 465 mm opening for large items e.g. Pots
- Insulated eco hood for energy saving and noise reduction saves up to 0.5 kW per hour
- Independently certified for ventless/hoodless installation (SEED)
- Self cleaning cycle

Standard accessories

- 1 x plate rack
- 1 x cup rack
- 1 x cutlery container

Please note: Heat recovery unit is supplied separately and will require assembly prior to use.



60 sec



90 sec



180 sec



+ 1 special



Please note, due to ongoing product development and improvement, we reserve the right to change product design and specification at any time without notice.



1800 013 123 | +61 2 9604 7333
sales@middleby.com.au
middleby.com.au

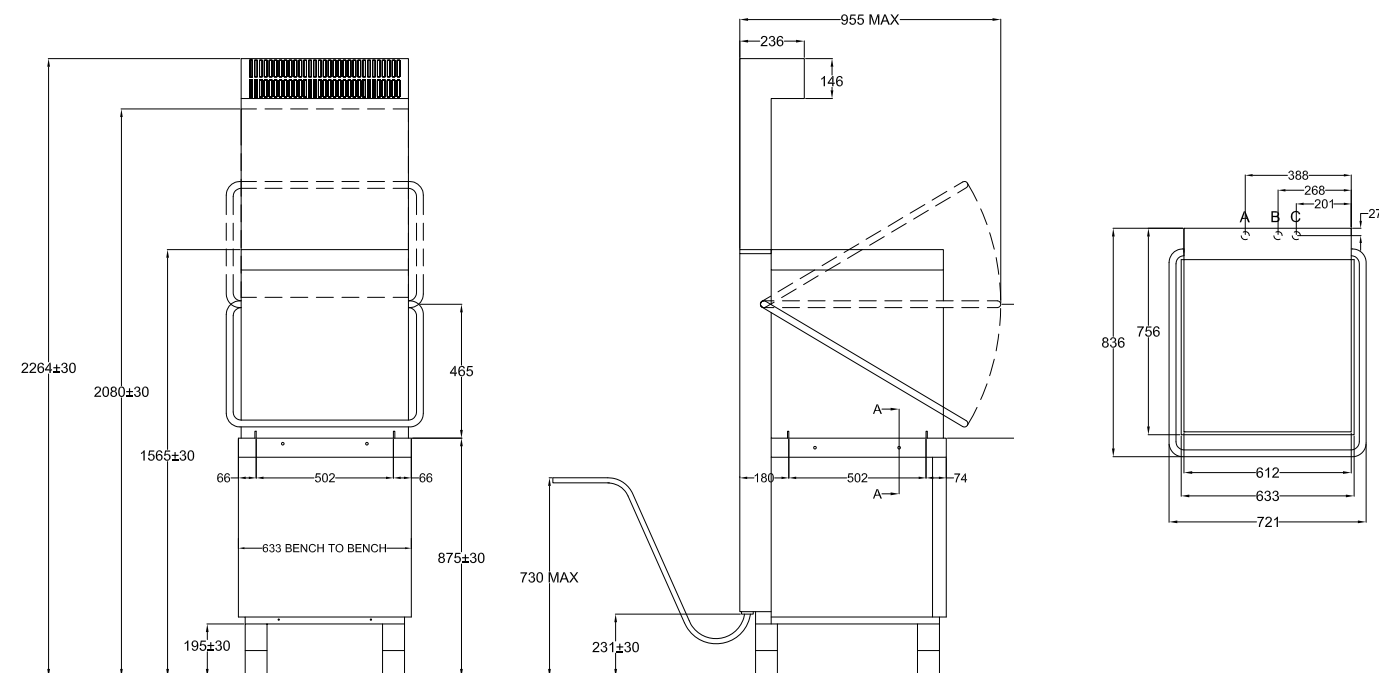
VIC - TAS - 47 Stubbs Street, Kensington VIC 3031
QLD - U12, 210 Queensport Rd Nth, Murarrie QLD 4172
WA - U2, 9 Meares Way, Canning Vale WA 6155

HEAD OFFICE
AND MANUFACTURING PLANT
211-217 Woodpark Road, Smithfield NSW 2164

vl_2025

E SW900V Smartwash Pass-through Warewasher

- A. Drain Connection $\varnothing 32$ mm Drain Tube
 B. Water Connection 3/4" SS Flexible Tube
 Water input temperature 15-25°C
 C. Electrical Connection 415V/3ph+N+E



SW900V SPECIFICATIONS

DISHWASHER DIMENSIONS (WxDxH)	633 x 755 x 1565 mm
HEAT RECOVERY UNIT DIMENSIONS (WxDxH)	633 x 755 x 700 mm
HOOD OPENING	465 mm
HOOD CONSTRUCTION	Double-skinned
HOOD LIFT SYSTEM	ProGlide (3 kg)
HOOD LIFT HANDLE	All-around
WASH CHAMBER	TotalClean - Pipe Free
RACK SIZE (WxD)	500 x 500 mm
RACK STAND CONSTRUCTION	S/S wire hinged
RATING	10.2 kW
MEAL SERVICE	40-80 pax
WASH CYCLE	60, 90, 180 sec + special
SELF CLEANING CYCLE	YES
WASH PUMP TYPE	Double flow

WASH PUMP POWER	700 W
DETERGENT & RINSE AID PUMP	Fitted
RINSE SYSTEM	SmartRinse
RINSE BOOSTER PUMP	Fitted
SELF DIAGNOSTIC SYSTEM	Fitted
BOILER HEATING ELEMENT	7 kW
DRAIN PUMP	Fitted
DRAIN SYSTEM	SmartDrain (deep drain)
DOSING SYSTEM	ProDose electr. Controlled
WATER CONSUMPTION	1.8 lt/rack
TANK CAPACITY	22 litres
TANK CONSTRUCTION	Deep drawn
TANK HEATING ELEMENT	2,5 kW
WEIGHT	150 kg
PACKED	1.332 m ³



PE-388-GE-09

Please note, due to ongoing product development and improvement, we reserve the right to change product design and specification at any time without notice.



1800 013 123 | +61 2 9604 7333
 sales@middleby.com.au
 middleby.com.au

VIC - TAS - 47 Stubbs Street, Kensington VIC 3031
QLD - U12, 210 Queensport Rd Nth, Murarrie QLD 4172
WA - U2, 9 Meares Way, Canning Vale WA 6155

HEAD OFFICE AND MANUFACTURING PLANT
 211-217 Woodpark Road, Smithfield NSW 2164

v1_2025