

## Crafted by Technology Inspired by Tradition

Suitable Model for High-Speed Rice Ball Production. The Nigiri Machine delivers hand-crafted texture and shape comparable to sushi chefs

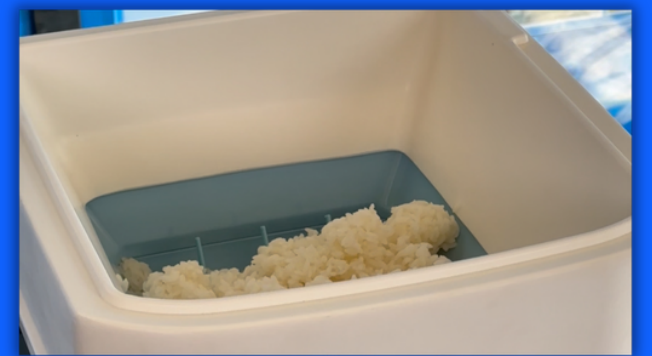


## Just One-Touch Industrial High-Speed Performance

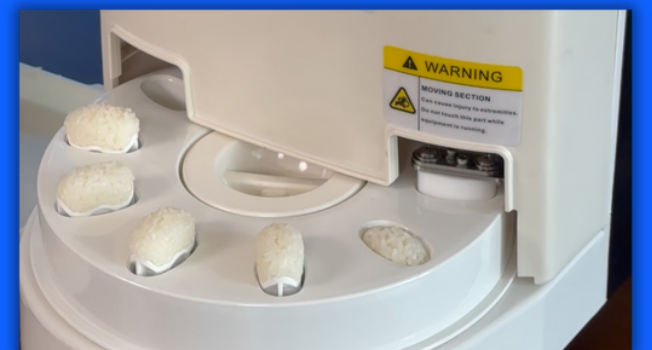
The machine automatically fluffs the rice, feeds precisely and forms each piece without damaging the texture – ensuring consistent and stable output



### Add rice in to the Hopper



### Hand-made texture





SINCE 1993

## SPECIFICATION

### Specifications:

#### Model

TSM-N1

#### Input

AC100-240V

#### Power Consumption

90W

#### Capacity

3200 Rice Ball / hours

#### Hopper capacity

6kg

#### Rice Ball Size

16 - 20 Gram

#### Machine dimensions (in mm)

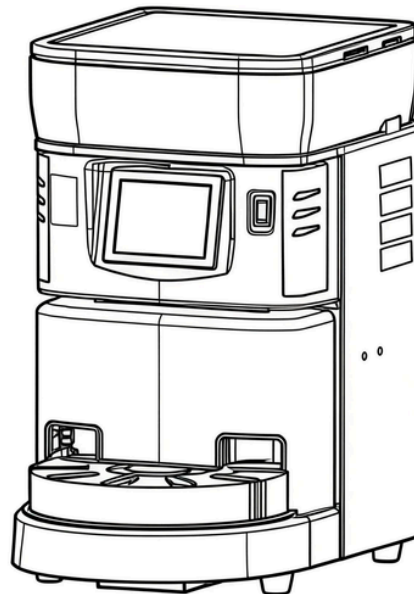
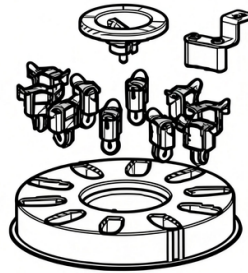
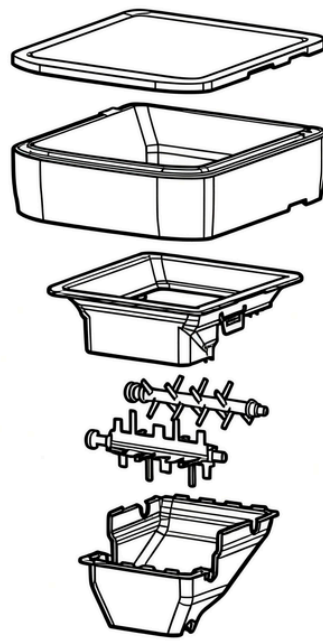
Width: 470mm

Depth: 360mm

Height: 590mm

#### Weight

30kg



## FEATURE

- **High Precision Weight Control**  
Advanced weight correction system ensures consistent portion size for every rice ball
- **Adjustable Density & Pressing System**  
Customize softness and firmness to match different rice types and customer preferences
- **High Output Capacity**  
Ideal for central kitchens, supermarkets and high-volume production
- **Smart Dual Sensor Technology**  
Automatic rice feeding sensor & turntable detection for precise stop control
- **Energy Efficient**  
Only 90W Power Consumption
- **Multi-Language Interface**  
Supports multiple languages for global operation
- **Built-in Rice Warmer System**  
Maintains rice temperature for consistent forming quality.
- **Automatic Safety Stop Protection**  
Machine stops immediately when safety cover is removed

# TSM-N1 NIGIRI RICE BALL MACHINE

## AFTER-SALES SUPPORT

Two Year Warranty  
24/7 Technical Support  
Lifetime Maintenance  
Spare parts replacement

## CONTACT US

Tel: +61 485 590 361  
Email: [sanheaustralia@outlook.com](mailto:sanheaustralia@outlook.com)  
Website: [www.conveyor-sushi.com](http://www.conveyor-sushi.com)  
Address: 10 Harrow Ct,  
Doncaster, VIC, 3108, Australia